

## OFT100A-SPS-A8

Mind O≠0, I≠I≠1, S≠5, B≠8.

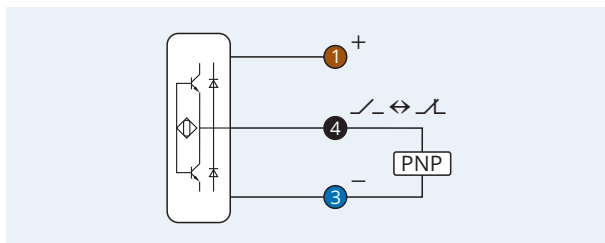
Supply voltage	10...35 V <sub>DC</sub>
Reverse polarity protection	built-in
Current consumption	<50 mA
Current load capability	200 mA
Detection principle	static ↔ dynamic
Resolution	2.5 mm
Output function	↘ ↔ ↗
Output polarity	PNP
Response time   release time	25 μs
Sensitivity adjustment	270° potentiometer
Impulse lengthening	0...150 ms
Short circuit protection	built-in, self-resetting
Voltage drop	<1.2 V @ 200 mA
Operating temperature	-20...+55 °C · -3...+132 °F
Ambient light immunity	60 klx
IP code	IP67
Insulation voltage	500 V
Housing material	aluminum, black anodized
Impact protector material	aluminum, black anodized
Pane material	polycarbonate
Light source	LED infrared λ=940 nm
Switching indicator	LED yellow
Connection	connector M8 Pico
Weight	476 g · 16.8 oz.
Tariff code	85365019
Complies with	CE, RoHS



**Warranty** Our products are manufactured to stringent ISO 9001 European standards to ensure that our customers only receive the best quality.



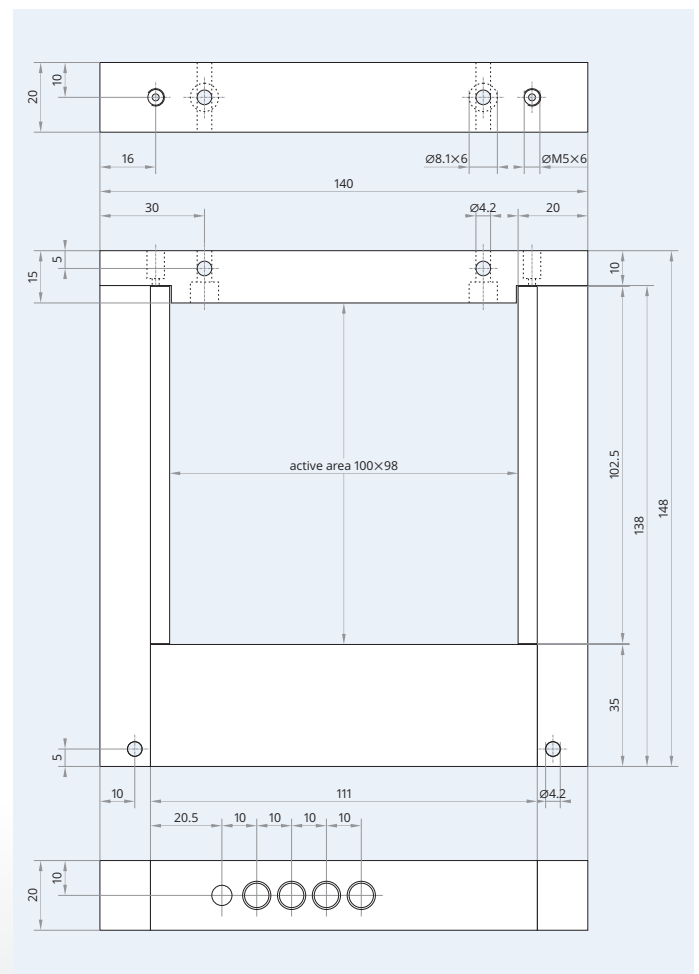
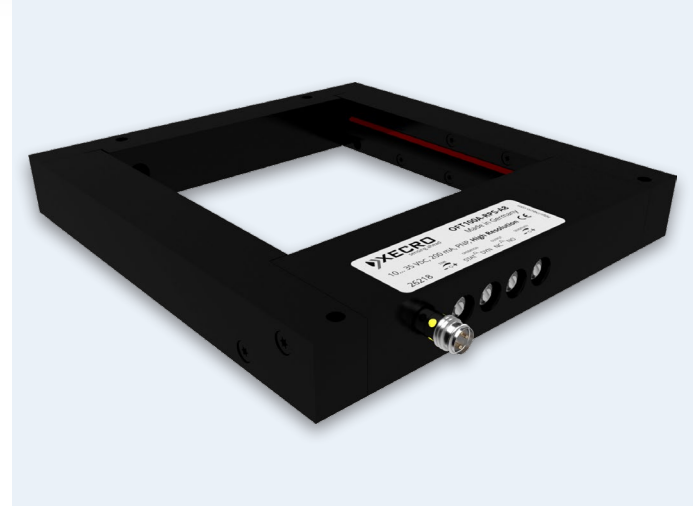
Wiring diagram



Pinout



## Frame Light Barrier with Crossbar High Speed Series Active Area: 100×98 mm<sup>2</sup>



**Caution!** This device shall not be used if the safety of persons rely on its faultless function.

XECRO reserves the right to make minor changes without prior notification.